

HOFMANN®



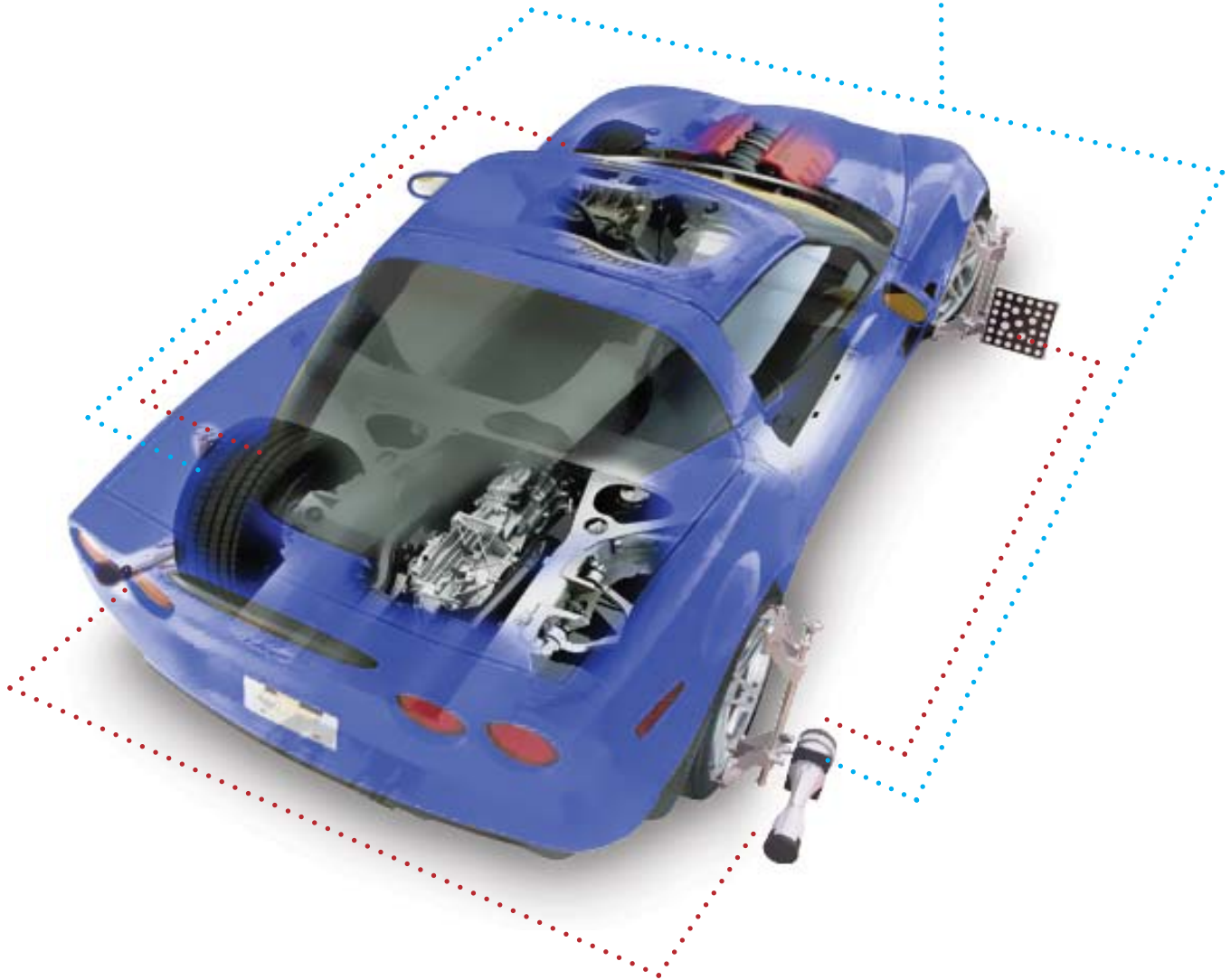
geoliner™ 550

WHEEL ALIGNER

NEW!

HOFMANN IMAGING TECHNOLOGY

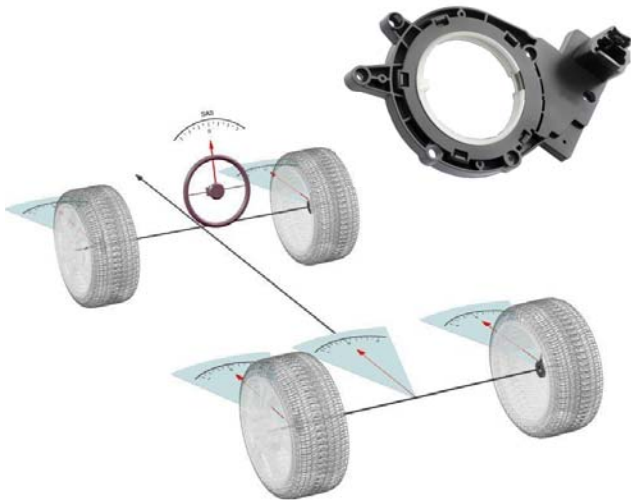
The Hofmann geoliner 550 features the next generation of imaging alignment technology patented by Snap-on Equipment. The geoliner 550 wheel alignment system uses high-definition imaging cameras encased in heavy-duty magnesium pods that mount to the rear wheels. A set of non-electronic, shatter-proof imaging targets are mounted to the front wheels to complete the system. Measuring information collected by the imaging system is transferred via Bluetooth™ wireless technology.



EZ-LINK™* STEERING ANGLE SENSOR (SAS) RESET

EZ-Link™ software alerts the technician of OEM service & maintenance procedures related to Electronic Stability Control and Electric Power Steering systems.

OEM instructions guide the technician through the process of resetting the steering angle sensors along with other sensors as required. EZ-Link™ includes manual as well as electronic resets.



⚠ Determine if this vehicle is equipped with Electronic Power Steering (EPS)
Always reference OEM documentation for up to date procedures.

After replacing the power steering motor and module assembly 3 procedures must be performed, Steering Position Sensor Calibration, Torque Sensor Calibration and Steering Tuning.

If replacing the steering column assembly only, the Steering Position Sensor and the Torque Sensor Calibration procedures must be performed.

The Steering Position Sensor and Torque Sensor Calibration procedures should also be performed after a suspension alignment.

Certain steering symptoms such as uneven return to center, poor center feel, uneven left/right assist, can be corrected by performing the Steering Position Sensor and Torque Sensor Calibration procedures.

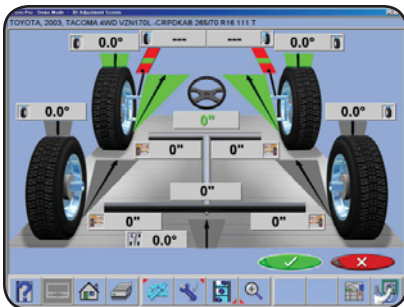
The Torque Sensor Calibration:

1. Turn the ignition OFF, install the scan tool.
2. Turn the ignition On, with the engine OFF.

Important: After centering the steering wheel, remove hands and other objects from the steering wheel and ensure the suspension is relaxed and no bias or uneven force is being applied to the steering system.

3. Center the steering wheel.

EASY-TO-USE ALIGNMENT SOFTWARE



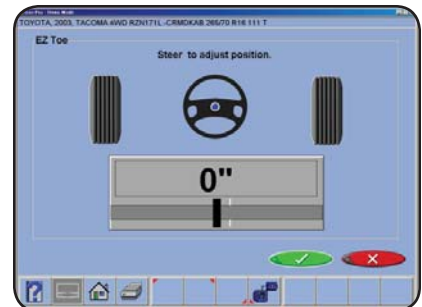
Step-by-Step Software

Advanced software guides the technician through the vehicle alignment.



Customer Database

Access and track customer service history.



EZ-Toe Software*

Reduces front toe adjustment time by up to 50%.



Animated Adjustment Aid

Technicians benefit from on-screen visual aids for vehicle-specific adjustments, including instructions, comments and necessary tools.

* Patented and/or Patent Pending Features



FEATURES

- SAI and Thrust Angle
- Toe Out On Turns/Max Turn
- Front and Rear Toe
- Front/Rear/All/Zoom Readings
- FrameCheck™ Light Truck Frame Angle
- Initial/Final Color Printouts
- Individual Camber/Caster/Toe
- Front Caster (-28° to +28°)
- Front & Rear Camber (-15° to +15°)
- 3D Animation
- Video Help
- A-Arm Adjustments
- Adjust Camber Only
- Elevated Adjustments
- Rear Shim Programs
- Multiple Lift Support (3)
- Vehicle Specs: 25+ years
- EZ-Link*
- EZ-Toe*
- Equalize Toe Warning
- Adjust Front Before Rear Warning
- Ride Height*
- Multiple Clamp Support
- 2-Wheel Alignment
- 28 Languages
- Multiple Print Formats
- Custom Vehicle Specifications
- Regional Specifications
- Integrated Help System (PDF)
- Tools, Parts, and Adjustment Instructions
- Advanced Customer Database with Backup/Restore
- Multiple Units of Measure
- Caster and SAI on Turntables
- SAI Elevated
- Live Caster, Camber and Toe - Turntables
- Live Caster, Camber and Toe - Elevated
- NorthStar Shim Program
- Light Truck Bushing
- Camber & Toe - Turntables (Frozen Caster)
- Camber & Toe - Elevated (Frozen Caster)

* Patented and/or Patent Pending Features

SPECIFICATIONS

Standard Accessories

- X-Light™ Wheel Clamps *EAK0289J10A*
- Front L/H and R/H Imaging Targets *EAK0289J12A*
- Rear L/H and R/H Pods *EAK0289J44A*
- Brake pedal depressor *00000096000*
- Steering Wheel Holder *00055502000*
- Color Ink Jet Printer

Recommended Accessories

- Premium Turntables *EAK0289J06A*

Optional Accessories

- Universal Wheel Clamp Ext. Kit *EAK0268J62A*
- Alloy Quick-Clamp Kit *EAK0268J63A*
- Remote Display Readout *EAK0268J08A*

Equipment Specifications

- Wheel size: 13" - 24"
- Tire diameter: 37"
- Tread width: 48" - 96"
- Wheel base: 79" - 180"
- Power Requirements: 120V/230V, 1Ph, 60Hz



* Patented and/or Patent Pending Features



USA

309 Exchange Avenue • Conway, AR 72032
(800) 251-4500 • (501) 505-2662
Fax (501) 450-2085 • www.hofmann-usa.com

HOFMANN®



Canada

6500 Millcreek Drive • Mississauga, ONT L5N 2W6
(800) 267-2185
Fax (905) 821-2073 • www.hofmann.ca

